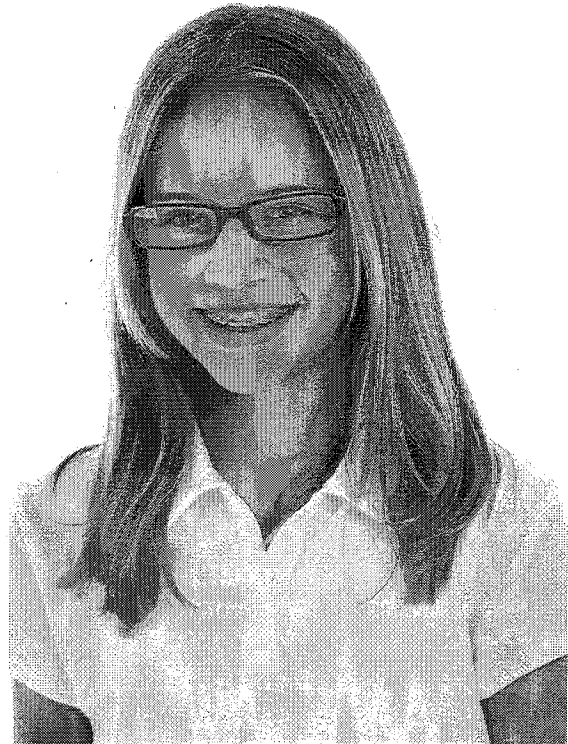


Value-Added Orthodontic Discount Program

Delta Dental members no longer have to 'brace' for the cost of orthodontic care. Delta Dental's value-added Orthodontic Discount Program provides all members and their eligible dependents a discounted fee for adult and child orthodontia if they obtain care from a Delta Dental of Idaho Discount Program orthodontist.



Number of Treatment Months	Fee Schedule Based on Length of Treatment
12 to 17 months	\$3,800
18 to 24 months	\$4,200
25+ months	\$4,600

Who is Eligible?

All members and their eligible dependents enrolled in a Delta Dental of Idaho dental plan that does not include an orthodontic benefit are eligible for Delta Dental's value-added Orthodontic Discount Program.

How Does the Discount Program Work?

Delta Dental members will experience substantial savings because Idaho orthodontists in the Orthodontic Discount Program agree to discounted fees. Members simply call and schedule a visit with a Delta Dental of Idaho Discount Program orthodontist and present their Delta Dental of Idaho ID card at the time of their appointment. The discount amount is based on the length of treatment. Members will know their total out-of-pocket costs prior to the beginning of treatment, so there will be no surprises! See the fee schedule above for details.

Is There a Cost for this Orthodontic Program?

No. Delta Dental of Idaho's Orthodontic Discount Program is a value-added service and is not insurance.

Please see the back of this flyer for a list of orthodontists in the Discount Program.

For more information, please call (208) 489-3580 or Email: CustomerService@deltadentalid.com



Provider List

Value-Added Orthodontic Discount Program

Delta Dental of Idaho members and their eligible dependents can receive a discounted fee on adult and child orthodontia treatment. Members simply call and schedule a visit with an orthodontist from the list below and present their Delta Dental of Idaho ID card at the time of their appointment. *This is a value-added service and is not insurance.*

Ammon

C. Jared Randall, DDS, MS
(208) 523-3380

Arco

C. Jared Randall, DDS, MS
(208) 527-3472

Blackfoot

C. Jared Randall, DDS, MS
(208) 785-3310

Michael Summers, DDS, MS
(208) 232-0464

Boise

Scott Alexander, DMD
(208) 331-5080

Steven Gilman, DMD
(208) 375-5012

Jacob R. Jarvis, DMD, MS
(208) 383-0100

Christopher L. Kelson, DMD
(208) 378-1300

Laura Lineberry, DDS, MS
(208) 658-9470

Marcus Lowry, DDS
(208) 377-0410

John Matunas, DDS
(208) 377-0252
(in two Boise locations)

Jon Miler, DDS, MS
(208) 323-4800

Stephen Morris, DDS, MS, PC
(208) 344-4334
(in two Boise locations)

John Slattery, DDS, MS
(208) 433-1122

Glen Smith, DDS
(208) 323-4458
(208) 377-5522
(in two Boise locations)

Sam Smith, DMD, MS
(208) 321-7006

Burley

Justin Ward, DMD
(208) 678-3265

Caldwell

Loren Short, DMD
(208) 454-4112

Eagle

Jacob R. Jarvis, DMD, MS
(208) 383-0100

Sam Smith, DMD, MS
(208) 321-7006

Emmett

Kelsey Peterson, DMD
(208) 365-6800

John Slattery, DDS, MS
(208) 433-1122

Garden City

Jason R. Howell, DMD, MS
(208) 388-1111

Grangeville

David L. Wilkinson, DDS
(208) 746-0479

Hailey

Troy Williams, DDS, MS
(208) 450-9314

Idaho Falls

Dwight D. Baker, DDS
(208) 524-0644

Rodney Hillam, DDS, MS
(208) 524-1800

Jeffrey W. Johnson, DDS
(208) 529-3500

Phillip David Lowder, DDS
(208) 524-1404

Layne McCord, DMD
(208) 529-8333

Bret E. Mooso, DDS, MS
(208) 522-4552

Brendon Swenson, DDS
(208) 529-8333

Kimberly

Troy Williams, DDS, MS
(208) 737-0006

Lewiston

Bret B. Christensen, DDS, MS
(208) 798-4427

David L. Wilkinson, DDS
(208) 746-0479

McCall

John Slattery, DDS, MS
(208) 433-1122

Meridian

Robert C. Gaudry, DDS
(208) 887-1053

Michael L. Gold, DMD
(208) 376-2422

Greg Guymon, DDS
(208) 898-0000

Jason R. Howell, DMD, MS
(208) 893-5151

Jacob Jarvis, DMD, MS
(208) 585-9200

Marcus Lowry, DDS
(208) 855-5045

Patrick Niland, DDS, MS
(208) 893-5440

Michael Payne, DMD
(208) 884-4466

John Slattery, DDS, MS
(208) 433-1122

Montpelier

Jeffrey W. Johnson, DDS
(208) 529-3500

Moscow

David L. Wilkinson, DDS
(208) 746-0479

Mountain Home

Steven Gilman, DMD
(208) 587-3010

Laura Lineberry, DDS, MS
(208) 587-4422

Nampa

Christian Cusimano, DDS
(208) 467-4362

Marcus Lowry, DDS
(208) 461-5459

Patrick Niland, DDS, MS
(208) 467-5259

John Slattery, DDS, MS
(208) 433-1122

Payette

Jason R. Howell, DMD, MS
(208) 893-5151

Pocatello

Michael Summers, DDS, MS
(208) 232-0464

Layne McCord, DMD
(208) 233-5500

Rufus Van Dyke, DDS
(208) 237-3330

Brendon Swenson, DDS
(208) 233-5500

Post Falls

Karl Peach, DDS
(208) 777-1010

Rexburg

Jeffrey W. Johnson, DDS
(208) 529-3500

C. Jared Randall, DDS, MS
(208) 356-3012

Andrew W. Summers, DDS
(208) 356-3621

Rigby

Phillip David Lowder, DDS
(208) 745-7407

Salmon

Phillip David Lowder, DDS
(208) 524-1404

Sugar City

Phillip David Lowder, DDS
(208) 745-7407

Sun Valley

Jason R. Howell, DMD, MS
(208) 893-5151

Terreton

C. Jared Randall, DDS, MS
(208) 663-4830

Twin Falls

Troy Williams, DDS, MDS
(208) 737-0006

Weiser

Scott Alexander, DMD
(208) 331-5080

If your orthodontist is not currently a participating provider in the Discount Orthodontic Program, please have them contact Delta Dental of Idaho at (208) 489-3544 or ProviderRelations@deltadentalid.com.